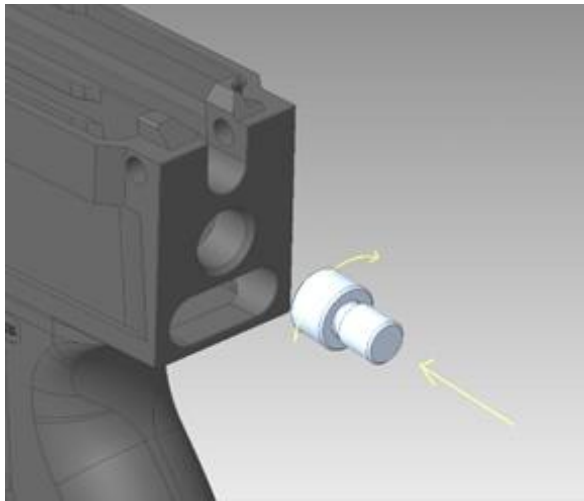
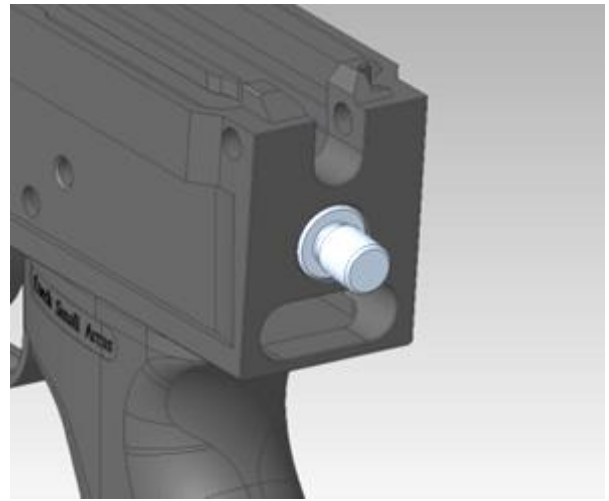


vz. 58 Picatinny Stock Adapter Installation

1. Screw the larger diameter side of the adapter screw (052PI) clockwise into the receiver (A) until its head is almost flush with the receiver rear wall (B).



A

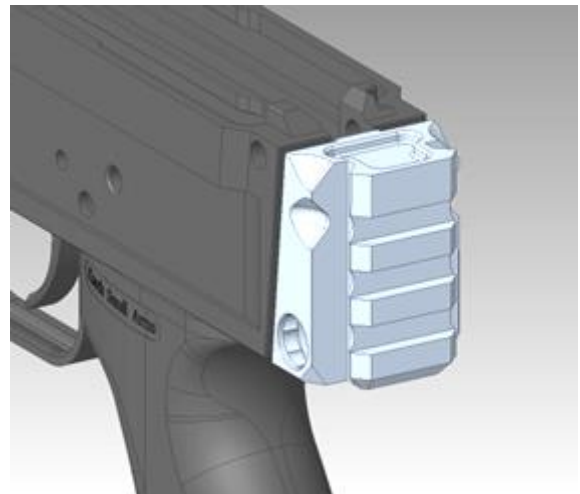


B

2. Screw the picatinny stock adapter (519P) onto the smaller diameter side of the screw protruding out of the receiver counter-clockwise (C) until it's correctly aligned (D).



C

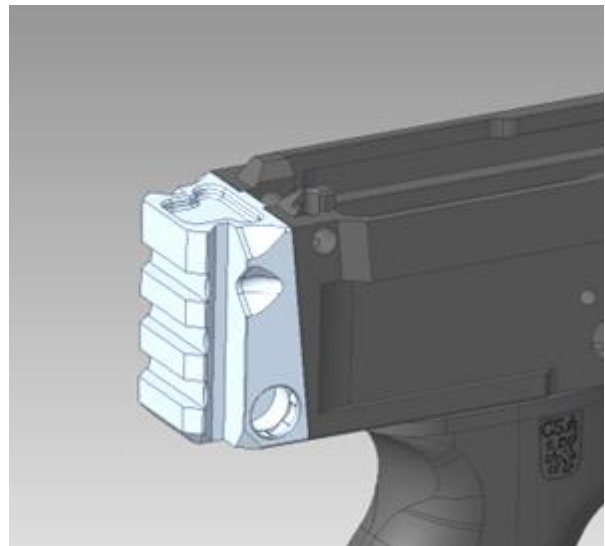


D

3. Tighten the screw from inside the receiver with a 6mm allen key, turning counter-clockwise (E). The adapter is tightened by reverse threads.



E



F (Final)